



Delivery & Invoicing



The Graphisoft core module optimizes estimating and job setup. GS Voice **bridges the gap** with the accounting department.

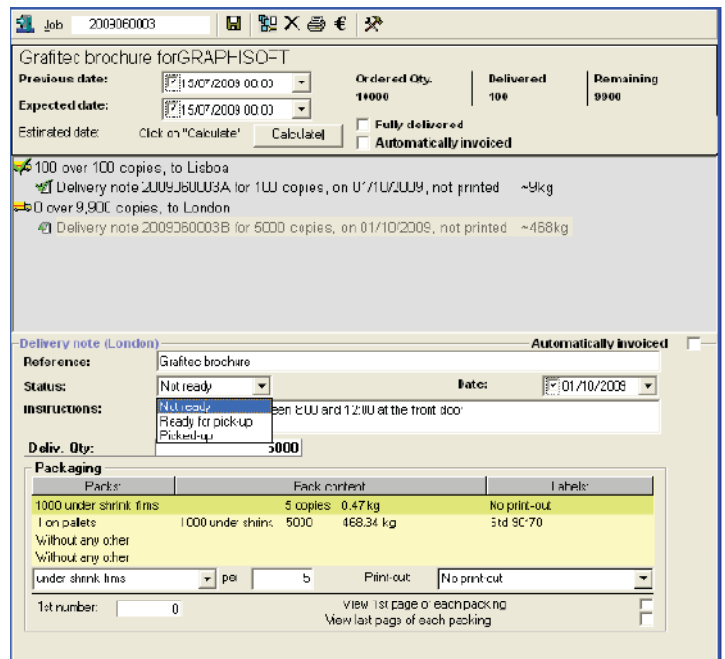
Job Delivery

- Manage delivery status **daily**
- Produce delivery notes with one click, based on **user-defined templates**
- Effortlessly prepare **shipping labels** for boxes and pallets

Invoicing

Easily prepare invoices by selecting the job folder, the delivery note or inventory control (completed products). The corresponding invoice is **automatically generated** according to a user-defined template.

- Partial and grouped invoices
- Easy-to-make revisions (quantities, author's alterations ...)
- Actual costs displayed to facilitate final invoicing decisions (GS Prod required)
- Monthly statements
- Interface with the accounting system (see list of supported interfaces)
- Complex jobs including multiple deliveries and invoices: full automation option for further productivity
- Completed Sales Report: YTD revenues, sorted by customers and by sales reps



Credit

- Information about customer's credit balance is available anywhere in Graphisoft
- Lock-out access to the credit line when the limit is reached

Key Benefits

- Increase administrative productivity by **eliminating redundant data entry**
- Avoid delivery failures
- Minimize late payments

Rhapso is a software editor.

Initially designed to meet expectations from the corrugating industry, EmaPack solution has been quickly expanded in order to provide folding cartons plants, transformers, paper industries and traders with a state-of-the art global ERP.

Moreover Rhapso sells Graphisoft as a leading solution for both printers and actors of the printing eco system.

4000 users on 1000 sites located in 30 countries are running Rhapso solutions all over the world. Rhapso is a CIP4 full member and supports JDF connections with all major suppliers of the market place. Visit our website: www.rhapso.com